

Short description



- Nickel plated alloy steel IP66 single point load cell
- Bending beam
- Suitable for belt, platform and other electronic weighing devices
- Maximum platform size:
 - for 50kg-200kg: 400 x 400 mm
 - for 250kg-500kg: 600 x 800 mm
 - for 750kg-2t: 1200 x 1200 mm

Available models

Capacity	Accuracy	Full article description
100kg	C3	H6F-C3-100kg-3B6
150kg	C3	H6F-C3-150kg-3B6
200kg	C3	H6F-C3-200kg-3B6
250kg	C3	H6F-C3-250kg-3B6
500kg	C3	H6F-C3-500kg-3B6
750kg	C3	H6F-C3-750kg-3B6
1000kg	C3	H6F-C3-1000kg-3B6
2000kg	C3	H6F-C3-2000kg-3B6

Specifications and dimensions are subject to change without notice and do not constitute any liability whatsoever.

Type H6F Load Cell

Technical specifications H6F

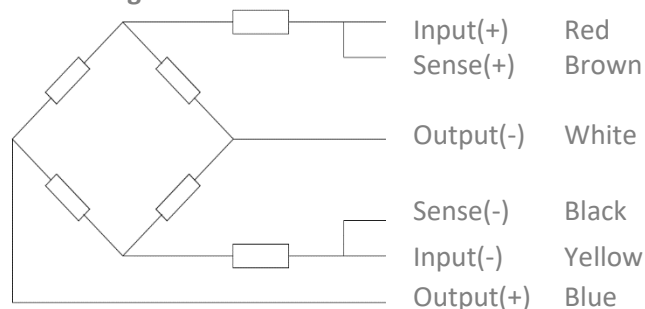
Accuracy class		C3
Output sensitivity (= FS)	mV/V	2.0 ± 0.2
Maximum capacity (E _{max})	kg	100, 150, 200, 250, 500, 750, 1000, 2000
Max. number of load cell intervals	n _{LC}	3000
Ratio of min. LC verification interval	$Y = E_{max} / v_{min}$	7500
Combined Error	%FS	≤± 0.020
Minimum dead load	Of E _{max}	0%
Safe overload	of E _{max}	150 %
Ultimate overload	of E _{max}	300 %
Zero balance	of FS	< ± 1.0 %
Excitation, recommended voltage	V	5 ~ 12
Excitation maximum	V	18
Input resistance	Ω	384 ± 4
Output resistance	Ω	351 ± 2
Insulation resistance	MΩ	≥5000 (at 50VDC)
Compensated temperature	°C	-10 ~ +40
Operating temperature	°C	-35 ~ +65
Storage temperature	°C	-40 ~ +70
Element material		Nickel plated alloy steel
Ingress Protection (acc. to EN 60529)		IP66
Recommended torque on fixation	Nm	M12:75 M16:200
ATEX classification (optional)		II1G Ex ia II1C T4 II1D Ex iaD 20 T73°C II3G nL IIC T4

Wiring

Features:

- Shielded, 6 conductor cable
- Cable diameter: Ø6.2mm
- Standard cable length: 3m
- Shield not connected to element

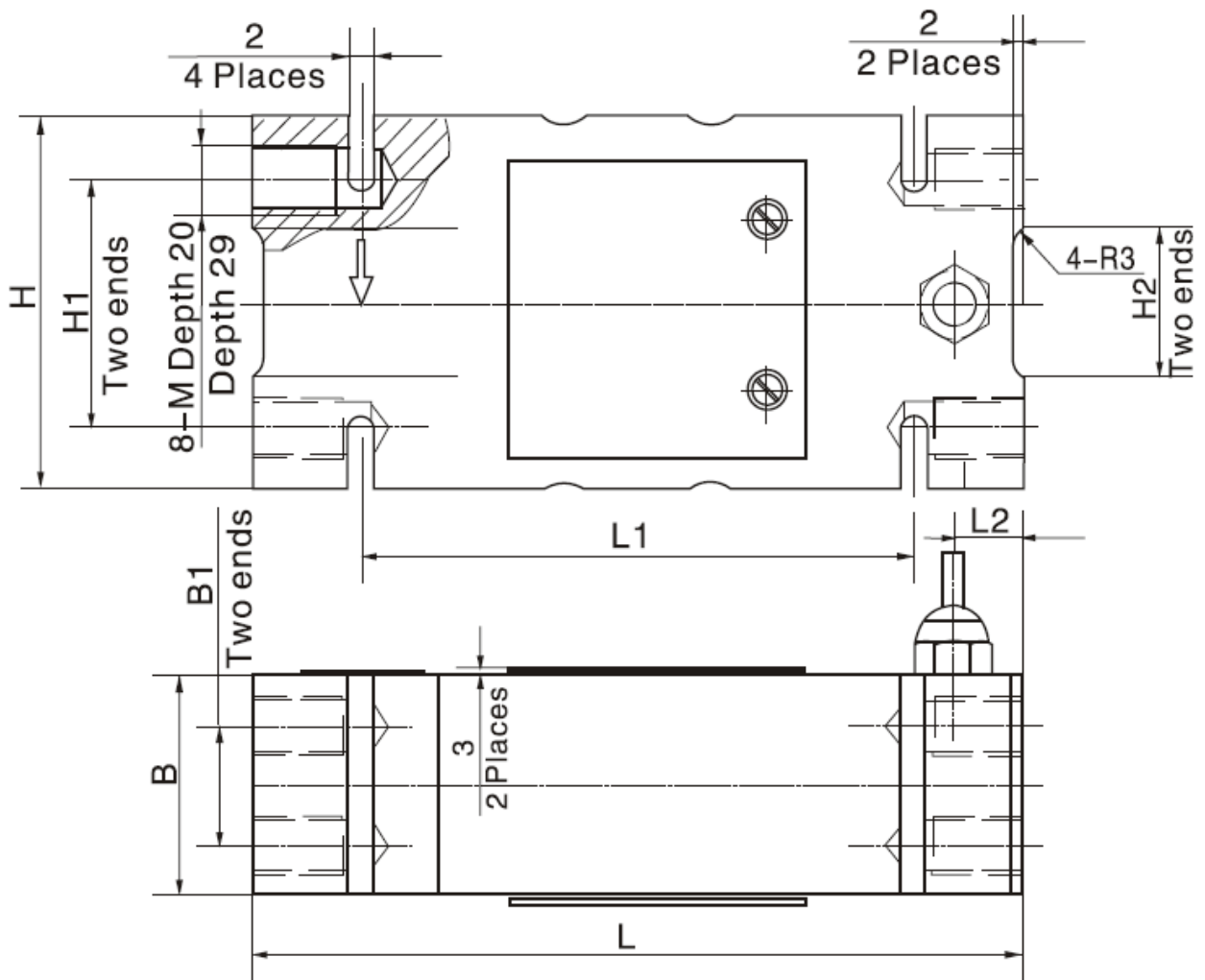
6-wire diagram



Specifications and dimensions are subject to change without notice and do not constitute any liability whatsoever.

Type H6F Load Cell

Dimensions in mm



Dimension Capacity	B	B1	H	H1	H2	L	L1	L2	M
50-200kg	44	24	75	50	30	156	112	14	M12
250-500kg	60	36	95	70	30	146	110	11	M12
750kg-2000kg	76	46	125	95	65	176	110	24	M16

Specifications and dimensions are subject to change without notice and do not constitute any liability whatsoever.